

Sapperton Wilder Moth Report

Spring 2025



Background

There are over 2500 species of moth in the UK, with over 1700 species recorded in Gloucestershire. The State of Britain's Larger Moths 2021 report showed that over two-thirds of common and widespread larger species (also known as macro-moths) declined in the last 50 years (Butterfly Conservation).

These declines in moth numbers have ripple effects across the food chain, as they are important prey for many other species including amphibians, small mammals, bats, and birds. Moths also play a crucial part in our agricultural systems as pollinators. To read more, please check out <https://butterfly-conservation.org/moths/why-moths-matter>.



In order to get an understanding of what the moth populations are like at Sapperton Wilder, we need to form a baseline to know what is present. It will take 2-3 years to form this baseline. Then as the project progresses, we can observe changes species abundance and diversity.

Methods

One of the most popular and effective ways to monitor moths is by using a “moth trap”. These traps are non-lethal. They vary widely in their design, but in essence attract moths using a light source and the moths are then drawn into a container until morning when they can be identified and released. 12 trapping sites were selected to represent each of the various land management and habitat types. As recording wasn’t structured or in any sort of scheme, trapping was done as and when volunteers were available.

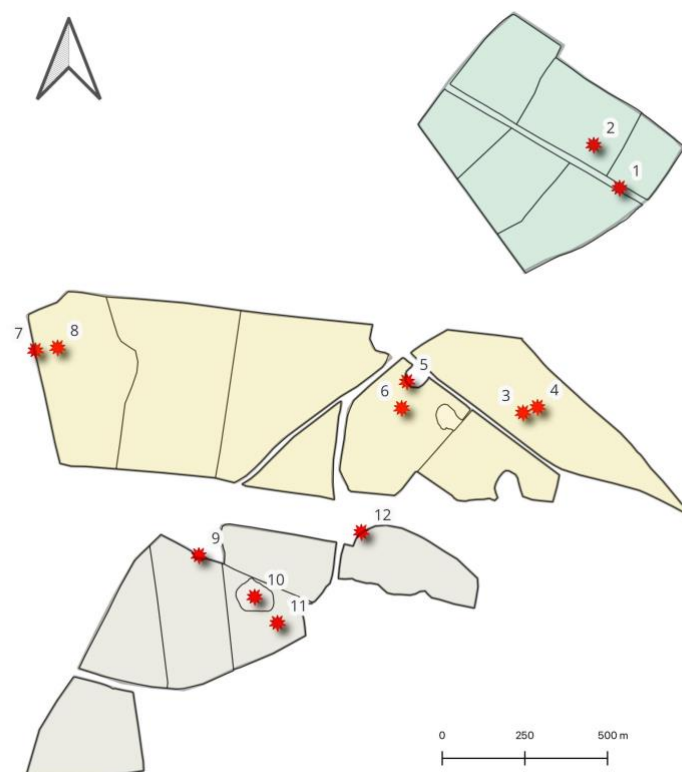


Figure 1: Moth trapping locations across the site





Peter Martin checking his moth traps. Photo: Charlie Nash

Results

Highlights in Numbers - 2024

3

Number of people involved

12

Number of trapping locations

85

Most recorded species (Hebrew Character)

249

Number of species recorded

1559

Total moth records

Most Common:

1. Hebrew Character (*Orthosia gothica*)
2. Common Swift (*Korscheltellus lupulina*)
3. Shaded Broad-bar (*Scotopteryx chenopodiata*)
4. Large Yellow Underwing (*Noctua pronuba*)
5. Scarce Footman (*Eilema complana*)

Best Month: July

Moths can be found all year round, some only emerging in the winter. However, the majority fly in the summer months. No moth trapping occurred in January or December, hence zero records. That's not to say there weren't moths flying during those months.



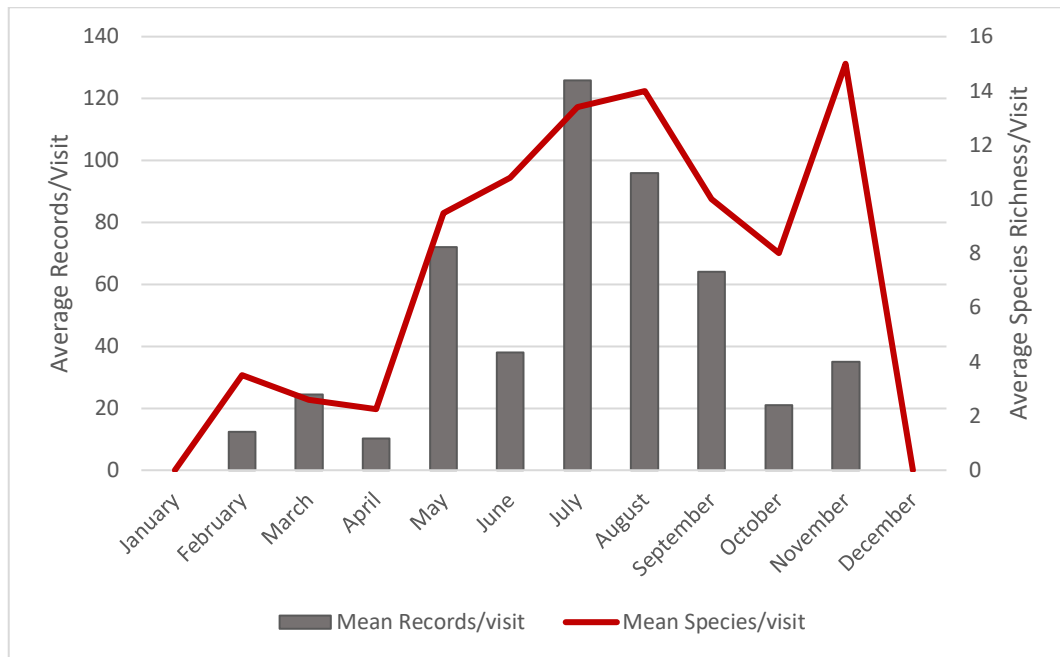


Figure 2: Average moth abundance (left axis) and diversity (right axis) per month

The data has been standardised on a monthly basis by taking the total number of records or species and dividing by the number of visits for that month.

Discussion

Species diversity and abundance were relatively matched throughout the year, with an interesting spike in species diversity in November. The results from this first year of monitoring are more of a snapshot than a full understanding of what species are present and what their populations are. The most commonly recorded moths (detailed below) are all common and widespread.

The Top Five

(Photos by Peter Martin and John Bromley)

1. Hebrew Character (*Orthosia gothica*)

- ◊ Common and widespread resident, flies mainly in Spring
- ◊ Caterpillar foodplant: variety of trees, shrubs, and plants including birch, aspen and oak.
- ◊ Named after the distinctive black mark on its wing that resembles the Hebrew character 'nun' or 'n'



2. **Common Swift** (*Korscheltellus lupulina*)

- ◇ Common and abundant in the South of the UK
- ◇ Caterpillar foodplant: feeds on the roots of grasses and many other wild and cultivated herbaceous plants
- ◇ Sometimes a pest of agriculture or horticulture
- ◇ Adults fly in May and June
- ◇ The male moths are smaller and more colourful than the female moths that tend to be larger and much plainer in colour



3. **Shaded Broad-bar** (*Scotopteryx chenopodiata*)

- ◇ Common and widespread
- ◇ Caterpillar foodplants: vetches and clovers
- ◇ Adults fly in July and August
- ◇ A distinctive 'delta' shaped moth with a broad brown central bar edges with narrower brown bars



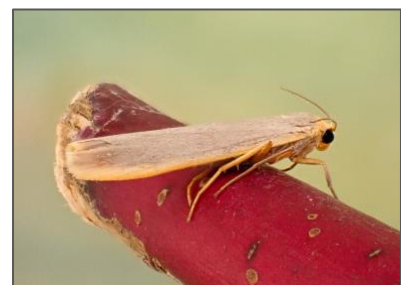
4. **Large Yellow Underwing** (*Noctua pronuba*)

- ◇ Possibly the most abundant of our larger moths
- ◇ Caterpillar foodplants: a wide range of herbaceous plants and grasses including docks, marigolds, foxglove, and annual meadow-grass
- ◇ Adults fly from July to September (freely attracted to light, often hundreds arriving at the moth trap in peak season).
- ◇ An extremely common moth whose upper wings are very variable in colour. It is named after its distinctive yellow underwings with a black edge. It is often called 'blunderbuss' after its habit of thundering around traps



5. **Scarce Footman** (*Eilema complana*)

- ◇ Relatively common
- ◇ Caterpillar foodplants: lichens, moss and leaves of some low plants
- ◇ Adults fly in July and August
- ◇ Unlike like the name suggests, this is a very common moth
- ◇ Folds its wings tightly giving it an elongated shape, unlike the other common footman moths that are much more boat shaped



What are the next steps?

The project has already begun land management geared towards the balancing of increasing biodiversity alongside food production. Actions such as not using pesticides, sowing herbal



leys and wildflower margins, letting the hedgerows expand with rotational topping, leaving uncut headlands, leaving certain fields fallow, and topping fields with a mosaic of topping heights, will provide an increasing level of habitat and plant diversity for all of the various moth species.

Annual monitoring will also help to paint a more comprehensive picture of butterfly species abundance and diversity, as well as hopefully capturing the presence of rare species or migrants. Results from moth trapping are submitted to the vice-county recorder. These then go to Butterfly Conservation and also get mapped for the Gloucestershire Moth Mapping Scheme.



Privet Hawk-moth (*Sphinx ligustri*). Photo: John Bromley

Acknowledgements

A huge thank you to Peter Martin, who has led the moth trapping at Sapperton. He's generously given his time to help get moth monitoring set up and contribute to the records. Also a big thank you to John Bromley for moth trapping, contributing to writing newsletters and this report. Both Peter and John are brilliantly talented photographers of moths and have generously shared their photos. Thank you also to Sam Clark for moth trapping at Sapperton.

And thank you to Steve French, who has been so helpful in getting monitoring setup at Sapperton and connecting us with passionate moth trappers in the local area. Steve also organised the Gloucestershire Invertebrate Group visit to Sapperton.

Resources

Butterfly Conservation <http://www.gloucestershire-butterflies.org.uk/index.php>



Appendix I: Species List

Scientific Name	Common Name	Type	Total	No Glos Records
<i>Orthosia gothica</i>	Hebrew Character	Macro	85	66
<i>Korscheltellus lupulina</i>	Common Swift	Macro	64	74
<i>Scotopteryx chenopodiata</i>	Shaded Broad-bar	Macro	59	20
<i>Noctua pronuba</i>	Large Yellow Underwing	Macro	52	131
<i>Eilema complana</i>	Scarce Footman	Macro	48	56
<i>Agapeta hamana</i>	Garden Straw	Micro	37	74
<i>Mythimna conigera</i>	Brown-line Bright-eye	Macro	36	21
<i>Opisthograptis luteolata</i>	Brimstone Moth	Macro	33	104
<i>Scoparia subfusca</i>	Large Grey	Micro	32	13
<i>Eilema lurideola</i>	Common Footman	Macro	32	79
<i>Thalpophila matura</i>	Straw Underwing	Macro	27	57
<i>Charanyca trigrammica</i>	Treble Lines	Macro	27	81
<i>Luperina testacea</i>	Flounced Rustic	Macro	25	56
<i>Eremobia ochroleuca</i>	Dusky Sallow	Macro	24	29
<i>Xestia c-nigrum</i>	Setaceous Hebrew Character	Macro	24	78
<i>Agriphila tristella</i>	Common Grass-moth	Micro	21	73
<i>Yponomeuta padella/malinellus/cagnagella</i>	Orchard Ermine agg.	Micro	21	agg.
<i>Xanthorhoe spadicearia</i>	Red Twin-spot Carpet	Macro	20	65
<i>Scoparia pyralella</i>	Brown-spot Grey	Micro	19	31
<i>Idaea aversata</i>	Riband Wave	Macro	18	92
<i>Mesapamea secalis</i> agg.	Common Rustic agg	Macro	18	agg.
<i>Alsophila aescularia</i>	March Moth	Macro	16	40
<i>Crambus perlella</i>	Satin Grass-moth	Macro	16	47
<i>Peribatodes rhomboidaria</i>	Willow Beauty	Macro	16	101
<i>Conistra vaccinii</i>	Chestnut	Macro	15	49
<i>Colocasia coryli</i>	Nut-tree Tussock	Macro	15	75
<i>Hydriomena furcata</i>	July Highflyer	Macro	14	17
<i>Lymantria monacha</i>	Black Arches	Macro	14	56
<i>Eudonia mercurella</i>	Garden Grey	Micro	14	64
<i>Colostygia pectinataria</i>	Green Carpet	Macro	14	77
<i>Mythimna pallens</i>	Common Wainscot	Macro	14	89
<i>Epirrhoe alternata</i>	Common Carpet	Macro	13	63
<i>Craniophora ligustri</i>	Coronet	Macro	13	68
<i>Eilema griseola</i>	Dingy Footman	Macro	13	74
<i>Xestia xanthographa</i>	Square-spot Rustic	Macro	13	76
<i>Hada plebeja</i>	Shears	Macro	12	35
<i>Phragmatobia fuliginosa</i>	Ruby Tiger	Macro	12	60
<i>Ochropleura plecta</i>	Flame Shoulder	Macro	12	83
<i>Horisme tersata</i>	Fern	Macro	11	35
<i>Sphinx ligustri</i>	Privet Hawk-moth	Macro	11	52
<i>Dysstroma truncata</i>	Common Marbled Carpet	Macro	11	78



<i>Apamea monoglypha</i>	Dark Arches	Macro	10	89
<i>Nudaria mundana</i>	Muslin Footman	Macro	9	32
<i>Acentria ephemerella</i>	Water Veneer	Micro	9	37
<i>Colotois pennaria</i>	Feathered Thorn	Macro	9	43
<i>Horisme vitalbata</i>	Small Waved Umber	Macro	9	43
<i>Plutella xylostella</i>	Diamond-back Moth	Micro	9	47
<i>Cnephasia</i> sp.	Grey Tortrix agg.	Micro	9	agg.
<i>Crassa unitella</i>	Brown Bark Moth	Micro	8	38
<i>Aporophyla nigra</i>	Black Rustic	Macro	8	43
<i>Ecliptopera silaceata</i>	Small Phoenix	Macro	8	53
<i>Alcis repandata</i>	Mottled Beauty	Macro	8	54
<i>Cosmia trapezina</i>	Dun-bar	Macro	8	61
<i>Chrysoteuchia culmella</i>	Garden Grass-moth	Micro	8	114
<i>Eupithecia dodoneata</i>	Oak-tree Pug	Macro	7	25
<i>Catoptria pinella</i>	Pearl Grass-moth	Micro	7	26
<i>Apamea sordens</i>	Rustic Shoulder-knot	Macro	7	53
<i>Eupithecia centaureata</i>	Lime-speck Pug	Macro	7	56
<i>Spilosoma lubricipeda</i>	White Ermine	Macro	7	56
<i>Chloroclysta siterata</i>	Red-green Carpet	Macro	7	57
<i>Orthosia cerasi</i>	Common Quaker	Macro	7	62
<i>Stenoptilia pterodactyla</i>	Brown Plume	Micro	6	10
<i>Diarsia mendica</i>	Ingrailed Clay	Macro	6	37
<i>Anorthoa munda</i>	Twin-spotted Quaker	Macro	6	38
<i>Xestia triangulum</i>	Double Square-spot	Macro	6	48
<i>Cilix glaucata</i>	Chinese Character	Macro	6	54
<i>Crambus lathoniellus</i>	Meadow Grass-moth	Micro	6	62
<i>Selenia dentaria</i>	Early Thorn	Macro	6	63
<i>Rivula sericealis</i>	Straw Dot	Macro	6	82
<i>Campaea margaritaria</i>	Light Emerald	Macro	6	87
<i>Agrotis exclamationis</i>	Heart & Dart	Macro	6	96
<i>Epirrita dilutata</i> agg.	November Moth agg.	Macro	6	agg.
<i>Earophila badiata</i>	Shoulder Stripe	Macro	5	20
<i>Aporophyla lutulenta</i>	Deep-brown Dart	Macro	5	25
<i>Mesoligia furuncula</i>	Cloaked Minor	Macro	5	32
<i>Cyclophora annularia</i>	Mocha	Macro	5	36
<i>Anticlea derivata</i>	Streamer	Macro	5	38
<i>Mythimna ferrago</i>	Clay	Macro	5	48
<i>Idaea biselata</i>	Small Fan-footed Wave	Macro	5	49
<i>Xylocampa areola</i>	Early Grey	Macro	5	51
<i>Triodia sylvina</i>	Orange Swift	Macro	5	52
<i>Lomasipilis marginata</i>	Clouded Border	Macro	5	59
<i>Phalera bucephala</i>	Buff-tip	Macro	5	69
<i>Spilosoma lutea</i>	Buff Ermine	Macro	5	73
<i>Eupsilia transversa</i>	Satellite	Macro	4	20



<i>Abraxas grossulariata</i>	Magpie	Macro	4	28
<i>Eupithecia icterata</i>	Tawny Speckled Pug	Macro	4	28
<i>Lampropteryx suffumata</i>	Water Carpet	Macro	4	29
<i>Selenia tetralunaria</i>	Purple Thorn	Macro	4	30
<i>Eilema depressa</i>	Buff Footman	Macro	4	32
<i>Euthrix potatoria</i>	Drinker	Macro	4	35
<i>Ptilodon capucina</i>	Coxcomb Prominent	Macro	4	35
<i>Acleris forsskaeana</i>	Netted Tortrix	Micro	4	38
<i>Diurnea fagella</i>	Early Reveller	Micro	4	40
<i>Scoparia ambigualis</i>	Common Grey	Micro	4	48
<i>Diarsia rubi</i>	Small Square-spot	Macro	4	58
<i>Mythimna impura</i>	Smoky Wainscot	Macro	4	63
<i>Eudonia lacustrata</i>	Tawny Grey	Micro	4	69
<i>Deilephila elpenor</i>	Elephant Hawk-moth	Macro	4	71
<i>Coleophora sp</i>	Case-bearer	Micro	4	Grade 4
<i>Idaea subsericeata</i>	Satin Wave	Macro	3	4
<i>Catoptria falsella</i>	Chequered Grass-moth	Micro	3	17
<i>Hemistola chrysoprasaria</i>	Small Emerald	Macro	3	21
<i>Eupithecia subfuscata</i>	Grey Pug	Macro	3	25
<i>Udea prunalis</i>	Dusky Pearl	Micro	3	43
<i>Laspeyria flexula</i>	Beautiful Hook-tip	Macro	3	47
<i>Euzophora pinguis</i>	Ash-bark Knot-horn	Micro	3	50
<i>Plagodis dolabraria</i>	Scorched Wing	Macro	3	50
<i>Diachrysa chrysitis</i>	Burnished Brass	Macro	3	63
<i>Noctua janthe</i>	Lesser Broad-bordered Yellow Underwing	Macro	3	72
<i>Calliteara pudibunda</i>	Pale Tussock	Macro	3	78
<i>Camptogramma bilineata</i>	Yellow Shell	Macro	3	97
<i>Watsonalla uncunila</i>	Spiny Hook-tip	Macro	2	1
<i>Perizoma bifaciata</i>	Barred Rivulet	Macro	2	2
<i>Acompsia cinerella</i>	The Cinerous	Micro	2	5
<i>Dichrorampha petiverella</i>	Yellow-spot Yarrow Moth	Micro	2	5
<i>Cerastis rubricosa</i>	Red Chestnut	Macro	2	8
<i>Zelothereses paleana</i>	Timothy Tortrix	Macro	2	8
<i>Agonopterix heracliata/ciliella</i>	Common Brindled Brown agg.	Micro	2	14
<i>Nemophora degeerella</i>	Yellow-banded Longhorn	Micro	2	15
<i>Agrochola circumcellaris</i>	Brick	Macro	2	19
<i>Agapeta zoegana</i>	Bright Straw	Micro	2	23
<i>Eupithecia haworthiata</i>	Haworth's Pug	Macro	2	23
<i>Cochylischroa atricapitana</i>	Black-fronted Straw	Micro	2	24
<i>Agrotis ipsilon</i>	Dark Sword-grass	Macro	2	25
<i>Myelois circumvoluta</i>	Thistle Ermine	Micro	2	25
<i>Pandemis heparana</i>	Dark Fruit-tree Tortrix	Micro	2	28
<i>Ectropis crepuscularia</i>	Engrailed	Macro	2	29
<i>Erannis defoliaria</i>	Mottled Umber	Macro	2	29



<i>Pseudargyrotoza conwagana</i>	Yellow-spotted Tortrix	Micro	2	31
<i>Leucania comma</i>	Shoulder-striped Wainscot	Macro	2	35
<i>Eilema sororcula</i>	Orange Footman	Macro	2	37
<i>Mitochondria miniata</i>	Rosy Footman	Macro	2	39
<i>Allophyes oxyacanthae</i>	Green-brindled Crescent	Macro	2	43
<i>Stauropus fagi</i>	Lobster Moth	Macro	2	45
<i>Xanthorhoe montanata</i>	Silver-ground Carpet	Macro	2	46
<i>Herminia tarsipennalis</i>	Fan-foot	Macro	2	47
<i>Blastobasis adustella</i>	Common Masoner	Micro	2	49
<i>Hedya pruniana</i>	Plum Tortrix	Micro	2	49
<i>Parapoynx stratiotata</i>	Ringed China-mark	Micro	2	49
<i>Idaea dimidiata</i>	Single-dotted Wave	Macro	2	51
<i>Agriphila geniculea</i>	Chevron Grass-moth	Micro	2	52
<i>Lycia hirtaria</i>	Brindled Beauty	Macro	2	52
<i>Acasis viretata</i>	Yellow-Barred Brindle	Macro	2	53
<i>Cabera pusaria</i>	Common White Wave	Macro	2	54
<i>Lomographa temerata</i>	Clouded Silver	Macro	2	55
<i>Crocallis elingaria</i>	Scalloped Oak	Macro	2	56
<i>Udea olivialis</i>	Garden Pearl	Micro	2	58
<i>Timandra comae</i>	Blood-vein	Macro	2	62
<i>Agrotis clavis</i>	Heart & Club	Macro	2	64
<i>Agriphila straminella</i>	Straw Grass-moth	Micro	2	71
<i>Hypena proboscidalis</i>	Snout	Macro	2	76
<i>Autographa gamma</i>	Silver Y	Macro	2	168
<i>Hoplodrina octogenaria/blanda</i>	Uncertain / Rustic agg.	Macro	2	agg.
<i>Oligia strigilis</i> agg.	Marbled Minor agg.	Macro	2	agg.
<i>eucosma</i> sp.	"bell" species	Micro	2	Grade 1 / 2
<i>Eucosma conterminana</i>	Lettuce Tortrix	Micro	1	0
<i>Eupithecia venosata</i>	Netted Pug	Macro	1	1
<i>Agonopterix liturosa</i>	Purple-shaded Brown	Micro	1	2
<i>Elachista atricomella</i>	Cock's-foot Miner	Micro	1	2
<i>Stenoptilia bipunctidactyla</i>	Twin-spotted Plume	Micro	1	2
<i>Aethes rubigana</i>	Burdock Straw	Micro	1	3
<i>Ypsolopha nemorella</i>	Pale Honeyuckle Moth	Micro	1	3
<i>Cleorodes lichenaria</i>	Brussels Lace	Macro	1	4
<i>Semioscopis steinkellneriana</i>	Black-marked Diviner	Micro	1	4
<i>Xanthorhoe quadrfasiata</i>	Large Twin-spot Carpet	Macro	1	4
<i>Epirrhoe galiata</i>	Galium Carpet	Macro	1	5
<i>Gillmeria pallidactyla</i>	Yarrow Plume	Micro	1	5
<i>Plagodis pulveraria</i>	Barred Umber	Macro	1	5
<i>Alabonia geoffrella</i>	Hedge Beauty	Micro	1	6
<i>Bucculatrix nigricomella</i>	Daisy Tuft	Micro	1	6
<i>Neocochylis dubitana</i>	White-faced Straw	Micro	1	7
<i>Scopula floslactata</i>	Cream wave	Macro	1	8



<i>Aspilapteryx tringipennella</i>	Ribwort Stilt	Micro	1	9
<i>Lithosia quadra</i>	Four-spotted Footman	Macro	1	9
<i>Macaria alternata</i>	Sharp-angled Peacock	Micro	1	9
<i>Selenia lunularia</i>	Lunar Thorn	Macro	1	9
<i>Eupithecia absinthiata</i>	Wormwood Pug	Macro	1	11
<i>Melanthia procellata</i>	Pretty Chalk Carpet	Macro	1	11
<i>Anaplectoides prasina</i>	Green Arches	Macro	1	12
<i>Coleophora mayrella</i>	Case-bearer	Micro	1	12
<i>Cydia fagiglandana</i>	Beech Mast Piercer	Micro	1	12
<i>Lobesia abscisana</i>	Thistle Marble	Micro	1	12
<i>Theria primaria</i>	Early Moth	Macro	1	12
<i>Paraswammerdamia albicapitella</i>	White-headed Drab	Micro	1	13
<i>Lithophane socia</i>	Pale Pinion	Macro	1	14
<i>Perizoma flavofasciata</i>	Sandy Carpet	Macro	1	14
<i>Eucosma hohenwartiana</i>	Common Knapweed Tortrix	Micro	1	15
<i>Mythimna vitellina</i>	Delicate	Macro	1	15
<i>Polia nebulosa</i>	Grey Arches	Macro	1	15
<i>Watsonalla cultraria</i>	Barred Hook-tip	Macro	1	15
<i>Eupithecia inturbata</i>	Maple Pug	Macro	1	19
<i>Acleris sparsana</i>	Lead-coloured Tortrix	Micro	1	20
<i>Hecatera bicolorata</i>	Broad-barred White	Macro	1	20
<i>Orthosia gracilis</i>	Powdered Quaker	Macro	1	20
<i>Phycita roborella</i>	Oak Knot-horn	Micro	1	20
<i>Plemyria rubiginata</i>	Blue-bordered Carpet	Macro	1	21
<i>Bryotropha terrella</i>	Brown Moss-moth	Micro	1	25
<i>Ennomos quercinaria</i>	August Thorn	Macro	1	25
<i>Furcula furcula</i>	Sallow Kitten	Macro	1	25
<i>Rusina ferruginea</i>	Brown Rustic	Macro	1	25
<i>Agriopis marginaria</i>	Dotted Border	Macro	1	26
<i>Ochropacha duplaris</i>	Common Lutestring	Macro	1	26
<i>Nematopogon swammerdamella</i>	Large Longhorn	Micro	1	27
<i>Habrosyne pyritoides</i>	Buff Arches	Macro	1	28
<i>Agrochola macilenta</i>	Yellow-line Quaker	Macro	1	30
<i>Cyclophora linearia</i>	Clay Triple-lines	Macro	1	31
<i>Cosmorhoe ocellata</i>	Purple Bar	Macro	1	32
<i>Biston strataria</i>	Oak Beauty	Macro	1	33
<i>Hadena bicruris</i>	Lychnis	Macro	1	33
<i>Yponomeuta evonymella</i>	Bird-cherry Ermine	Micro	1	34
<i>Apamea lithoxyloa</i>	Light Arches	Macro	1	35
<i>Hydraecia micacea</i>	Rosy Rustic	Macro	1	35
<i>Hedya nubiferana</i>	Marbled Orchard Tortrix	Micro	1	37
<i>Poecilocampa populi</i>	December Moth	Macro	1	37
<i>Anania coronata</i>	Elder Pearl	Micro	1	39
<i>Acleris variegana</i>	Garden Rose Tortrix	Micro	1	40



<i>Clepsia consimilana</i>	Rufous Tortrix	Micro	1	40
<i>Eupithecia tripunctaria</i>	White-spotted Pug	Macro	1	40
<i>Gandaritis pyraliata</i>	Barred Straw	Macro	1	40
<i>Notocelia uddmanniana</i>	Bramble Shoot Moth	Micro	1	40
<i>Thera britannica</i>	Spruce Carpet	Macro	1	40
<i>Pyrausta purpuralis</i>	Common Purple & Gold	Micro	1	41
<i>Menophra abruptaria</i>	Waved Umber	Macro	1	43
<i>Acrobasis advenella</i>	Hawthorn Knot-horn	Micro	1	45
<i>Pterophorus pentadactyla</i>	White Plume	Micro	1	46
<i>Chloroclystis v-ata</i>	V-Pug	Macro	1	47
<i>Carcina quercana</i>	Oak Longhorn	Micro	1	48
<i>Ditula angustiorana</i>	Red-barred Tortrix	Macro	1	49
<i>Cyclophora punctaria</i>	Maiden's Blush	Macro	1	56
<i>Ourapteryx sambucaria</i>	Swallow-tailed Moth	Macro	1	57
<i>Ligdia adustata</i>	Scorched Carpet	Macro	1	58
<i>Tortrix viridana</i>	Green Oak Tortrix	Micro	1	58
<i>Abrostola tripartita</i>	Spectacle	Macro	1	62
<i>Eupithecia vulgata</i>	Common Pug	Macro	1	64
<i>Aphomia sociella</i>	Bee Moth	Micro	1	65
<i>Celypha lacunana</i>	Common Marble	Micro	1	65
<i>Xanthorhoe fluctuata</i>	Garden Carpet	Macro	1	65
<i>Hoplodrina ambigua</i>	Vine's Rustic	Macro	1	66
<i>Noctua comes</i>	Lesser Yellow Underwing	Macro	1	66
<i>Acronicta rumicis</i>	Knot Grass	Macro	1	70
<i>Patania ruralis</i>	Mother of Pearl	Micro	1	72
<i>Anania hortulata</i>	Small Magpie	Micro	1	77
<i>Tyria jacobaeae</i>	Cinnabar	Macro	1	82
<i>Acronicta tridens</i> agg	Dark Dagger / Grey Dagger agg.	Macro	1	agg.
<i>Dichrorampha alpinana</i>	Orange-spotted Daisy Moth	Micro	1	Grade 4
<i>Paraswammerdamia nebulella</i>	Hawthorn Drab	Micro	1	Grade 4
<i>Bryotropha</i> sp	"Neb" species	Micro	1	Mostly Grade 2
<i>Elachista</i> sp.	"grass-miner" species	Micro	1	Mostly Grade 4
<i>Hoplodrina octo</i>	Uncertain	Macro		59

